

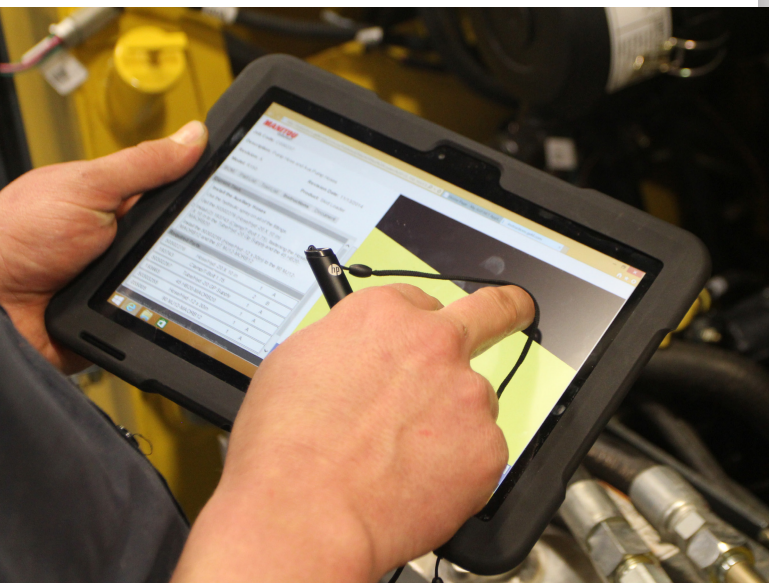
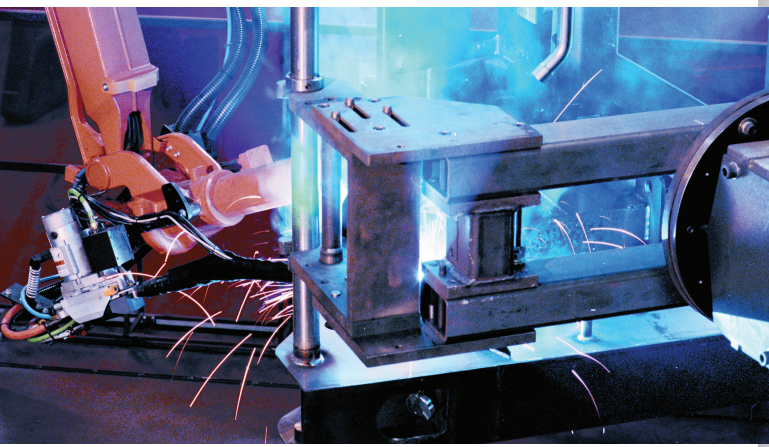
# BACKHOE LOADERS



BL818-CM | BL818-S | BL844-CM | BL844-S



# A LEGACY OF INNOVATION



**IN 1859, AN AGRICULTURAL IMPLEMENT COMPANY, HOUSED IN A BLACKSMITH SHOP, WAS STARTED IN WEST BEND, WISCONSIN.**

FROM THESE HUMBLE BEGINNINGS, THE GEHL BRAND HAS BECOME A MAJOR FORCE IN THE COMPACT EQUIPMENT INDUSTRY WORLDWIDE.

Since the beginning, Gehl has focused on providing solutions to our customer's needs by building quality, reliable products. With a long history of reliability and innovation, Gehl is responsive to the equipment and service needs of our customers.

With modern compact equipment manufacturing facilities in Yankton and Madison, South Dakota, and a state-of-the-art research and design facility in West Bend, Wisconsin, Gehl ensures that they are equipped with the finest in technology, tools and materials. And our top corps of engineers are skilled in designing and enhancing high-quality machines to fit the specific needs of our customers. Our equipment is modern in design and performance, but not too complicated to operate or service.

And when you purchase a piece of Gehl equipment, you have an entire organization behind you and your business. When you need support, whether it be financing, parts or service, know that Gehl will be there to provide an exceptional experience. We continually strive to preserve the level of personalized attention that Gehl began with in 1859.

# EFFICIENCY FROM GEHL.

## WELCOME TO THE BACKHOE LOADER FAMILY.

Gehl is breaking new ground with its range of versatile, innovative and efficient backhoe loaders. Designed to increase your productivity and profitability, these powerful workhorses have a host of new features aimed at enhancing comfort, reducing driver fatigue and aiding productivity.



# PERFORMANCE

● POWER and ● PERFORMANCE

## TURNING HEADS AROUND THE WORLD

### ● HEAVY DUTY TRANSMISSION AND FRONT AXLES

A heavy duty machine needs a transmission and axles to match. That's why Gehl backhoe loaders use a 4 speed synchro-shuttle transmission with a modulated clutch pack which delivers excellent traction and smooth forward & reverse shifting during loading and dozing operation. When combined with a front axle that allows for 16 degrees of oscillation and sealed king pins, you have a highly durable machine that delivers lower maintenance costs.

### ● POWER WITH FUEL EFFICIENCY

Our standard 92hp Perkins or 90hp KOEL turbo charged engines deliver outstanding power, torque and fuel efficiency without wasting fuel. Lower fuel and maintenance costs ultimately mean higher earnings with our backhoe loader products.



### ● BETTER BUCKETS MEAN GREATER PERFORMANCE

The loader & backhoe buckets offered on our machines are specifically designed to deliver durability and productivity. Backhoe buckets have a maximum rotation of 194 degrees that allow operators to pick up more material with less spillage. Our self-leveling loader buckets improve stability, lessen spillage and come in range of sizes including the popular 7-in-1 bucket that allows you to tackle a wide range of jobsite tasks.

### STANDARD AND EXTENDED DIPPER

Users have the opportunity to choose between a standard and optional extended dipper. The standard dipper has a 4.74 m maximum dig depth, while the optional extended dipper increases the dig depth by one meter. Thereby allowing the operator to dig faster with less repositioning and resulting in a better ROI.



### SIDE MOUNT AND CENTER MOUNT MODELS

Gehl backhoe models come in either side shift or center mount models. Side shift models allow for a greater reach and lesser amount of machine repositioning. Center mount models come with butterfly stabilizers for deeper penetration.

**GEHL**

# OPERATOR STATION

● COMFORT and ● SAFETY



## ● CABIN VENTILATION

Improved operator comfort is realized through the use of rear quarter windows that when open allow air flow as well as improved right-angle trenching visibility.

## ● COMFORT AND CONVENIENCE

Factory installed FM radio and optional air conditioning allows you to customize your cabin to your needs.

## ● ADJUSTABLE SEAT

A seven-way adjustable seat provides excellent operator comfort. Additionally the operator can rotate the seat to access the excavator levers. Suspension or mechanical suspension seats are available.

## ● LEVEL II ROPS/FOPS

Gehl places an emphasis on operator comfort and safety. All backhoe loaders are Level II ROPs & FOPs standard, which provides added levels of protection for the operator.

● **SAFETY STARTS WITH VISIBILITY**

A spacious cabin, wide openings in the front, side and rear of the machine give the operator unobstructed views of the jobsite surroundings and nearby bystanders.

## ATTACHMENTS



● **ROCK BREAKER**

Break concrete quickly and easily into smaller, easy to load pieces. Using only two moving parts our breakers provide the power to break through the toughest materials.



● **EXTENDED DIPPER**

The standard dipper has a 4.74 m maximum dig depth, while the optional extended dipper increases the dig depth by one meter. Thereby allowing the operator to dig faster with less repositioning and a better ROI.



● **TRENCHING BUCKETS**

A 0.24 cubic meter trenching bucket is standard on Gehl backhoe loader machines. Five additional sizes are available as options, which allows operators to match the machine to the work required.



● **7-IN-1 BUCKETS**

This flexible attachment turns a Gehl backhoe loader into an indispensable jobsite tool. The 7-in-1 bucket allows an operator to dig, drab, load, grade and much more, increasing their productivity and efficiency.

# SPECIFICATIONS

## SPECIFICATIONS

		BL844-S		BL844-CM		BL818-S		BL818-CM		
DIMENSIONS	Overall Length	7338 mm	24' 1"	7338 mm	24' 1"	7338 mm	24' 1"	7338 mm	24' 1"	
	Overall Height	3762 mm	12' 4"	3762 mm	12' 4"	3762 mm	12' 4"	3762 mm	12' 4"	
	Wheelbase	2130 mm	7' 0"	2130 mm	7' 0"	2130 mm	7' 0"	2130 mm	7' 0"	
	Overall Width	2330 mm	7' 7"	2330 mm	7' 7"	2330 mm	7' 7"	2330 mm	7' 7"	
	Cabin Height	2770 mm	9' 1"	2770 mm	9' 1"	2770 mm	9' 1"	2770 mm	9' 1"	
	Ground Clearance	400 mm	1' 4"	400 mm	1' 4"	400 mm	1' 4"	400 mm	1' 4"	
BACKHOE PERFORMANCE	Maximum Dig Depth	4741 mm	8' 11"	4741 mm	8' 11"	4741 mm	8' 11"	4741 mm	8' 11"	
	Maximum Reach - Ground Level to Slew Center	5730 mm	18' 10"	5730 mm	18' 10"	5730 mm	18' 10"	5730 mm	18' 10"	
	Maximum Loading Reach	1996 mm	6' 7"	1996 mm	6' 7"	1996 mm	6' 7"	1996 mm	6' 7"	
	Maximum Operating Height	5659 mm	18' 7"	5659 mm	18' 7"	5659 mm	18' 7"	5659 mm	18' 7"	
	Maximum Loading Height SAE	3553 mm	11' 8"	3553 mm	11' 8"	3553 mm	11' 8"	3553 mm	11' 8"	
	Maximum Loading Height	3871 mm	12' 8"	3871 mm	12' 8"	3871 mm	12' 8"	3871 mm	12' 8"	
	Maximum Straight Wall Dig Depth	2602 mm	8' 5.4"	2602 mm	8' 5.4"	2602 mm	8' 5.4"	2602 mm	8' 5.4"	
	Maximum Bucket Rotation	194 °		194 °		194 °		194 °		
	Dipper Tear Out	3946 kgf	8700 lbf	3946 kgf	8700 lbf	3946 kgf	8700 lbf	3946 kgf	8700 lbf	
	Bucket Tear Out	5219 kgf	11,506 lbf	5219 kgf	11,506 lbf	5219 kgf	11,506 lbf	5219 kgf	11,506 lbf	
	Hydraulic Lift Capacity	1384 kgf	3051 lbf	1384 kgf	3051 lbf	1384 kgf	3051 lbf	1384 kgf	3051 lbf	
	LOADER PERFORMANCE	Maximum Dump Height at 45°	2708 mm	8' 11"	2708 mm	8' 11"	2708 mm	8' 11"	2708 mm	8' 11"
		Maximum Loadover Height	3310 mm	10' 10"	3310 mm	10' 10"	3310 mm	10' 10"	3310 mm	10' 10"
Maximum Hinge Pin Height		3550 mm	11' 8"	3550 mm	11' 8"	3550 mm	11' 8"	3550 mm	11' 8"	
Maximum Reach at Full Height		1282 mm	4' 3"	1282 mm	4' 3"	1282 mm	4' 3"	1282 mm	4' 3"	
Maximum Reach at Full Height 45°		829 mm	2' 9"	829 mm	2' 9"	829 mm	2' 9"	829 mm	2' 9"	
Below Ground Dig Depth		156 mm	6"	156 mm	6"	156 mm	6"	156 mm	6"	
Rollback at Ground		45°		45°		45°		45°		
Maximum Dump Angle		57°		57°		57°		57°		
Maximum Operating Height		4230 mm	13' 11"	4230 mm	13' 11"	4230 mm	13' 11"	4230 mm	13' 11"	
Arms Breakout		4685 kgf	10,329 lbf	4685 kgf	10,329 lbf	4685 kgf	10,329 lbf	4685 kgf	10,329 lbf	
Lift Capacity to Full Height		3465 kgf	7639 lbf	3465 kgf	7639 lbf	3465 kgf	7639 lbf	3465 kgf	7639 lbf	
OPERATING WEIGHT		Machine Kerb Weight	7500 kg	16,535 lbs	7500 kg	16,535 lbs	7500 kg	16,535 lbs	6885 kg	15,179 lbs
	Machine Kerb Weight with 4WD	7600 kg	16,755 lbs	7600 kg	16,755 lbs	7600 kg	16,755 lbs	6985 kg	15,399 lbs	
	Machine Kerb Weight with 4WD & 7-in-1	7930 kg	17,483 lbs	7930 kg	17,483 lbs	7930 kg	17,483 lbs	7315 kg	16,127 lbs	
TURNING RADIUS	Inner wheels not braked* Over Tires   Over Bucket	8.4 m	27' 7"	8.4 m	27' 7"	8.4 m	27' 7"	8.4 m	27' 7"	
	Inner wheels braked* Over Tires   Over Bucket	7.2 m	23' 8"	7.2 m	23' 8"	7.2 m	23' 8"	7.2 m	23' 8"	
CAPACITY	Fuel Tank	120 L	31.7 gal	120 L	31.7 gal	120 L	31.7 gal	42.3 gal	160 L	
	Engine Coolant	16 L	4.2 gal	16 L	4.2 gal	16 L	4.2 gal	4.2 gal	16 L	
	Engine Oil	11 L	2.9 gal	11 L	2.9 gal	2.4 gal	9.1 L	2.4 gal	9.1 L	
	Transmission	15 L	3.96 gal	15 L	3.96 gal	15 L	3.96 gal	3.96 gal	15 L	
	Rear Axle	17.5 L	4.6 gal	17.5 L	4.6 gal	17.5 L	4.6 gal	4.6 gal	17.5 L	
	Hydraulic Oil	90 L	23.8 gal	90 L	23.8 gal	90 L	23.8 gal	23.8 gal	90 L	

\* Per ISO 14396

Gehl reserves the right to make changes in specifications at any time without notice or obligation.



GEHL COMPACT EQUIPMENT

B.P. 249 - 430 rue de L'Aubinière  
44158 Ancenis Cedex - France  
Tel : 00 33 (0)2 40 09 10 11  
Fax: 00 33 (0)2 40 83 36 88

Gehl Company reminds users to read and understand the operator's manual before operating any equipment. Also, make sure all safety devices and shields are in place and functioning properly.

Gehl reserves the right to add improvements or make changes in specifications at any time without notice or obligation.